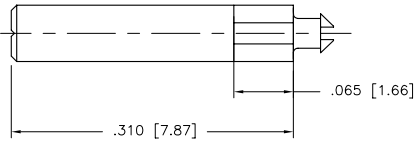
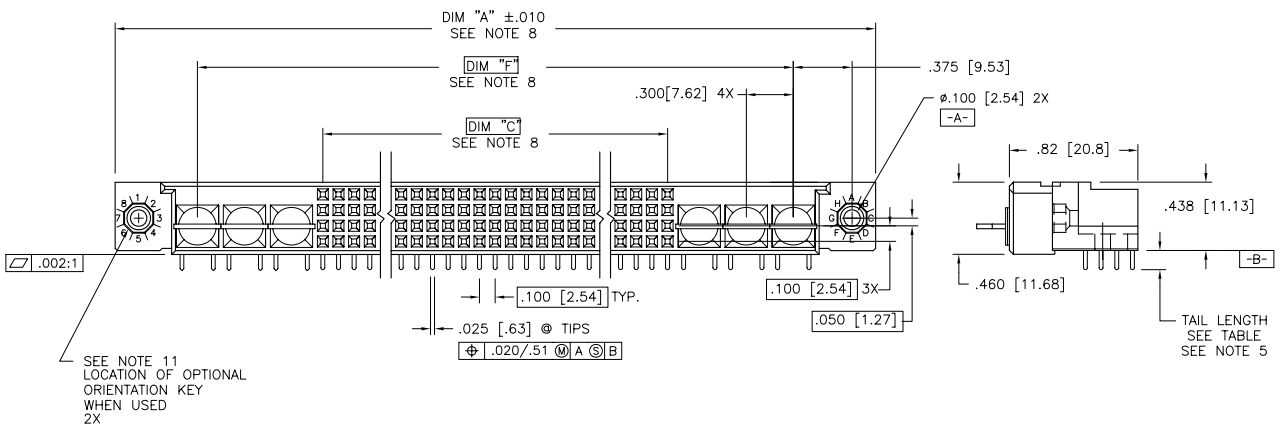
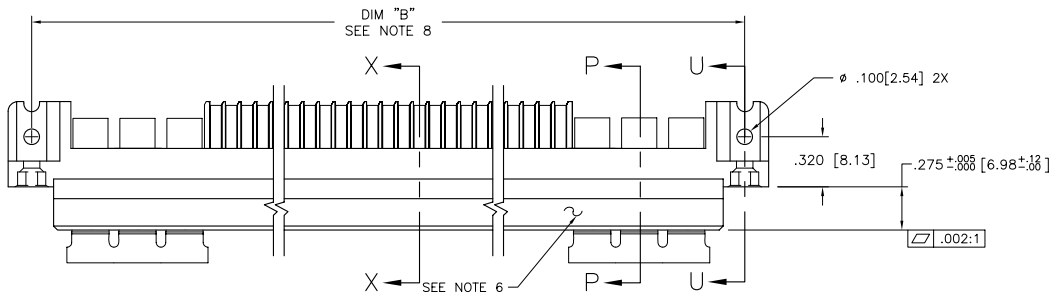



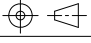
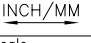
Tous droits strictement réservés. Reproduction ou communication à des tiers interdite sous quelque forme que ce soit sans autorisation écrite du propriétaire. Property of FCI. Droits de reproduction FCI.

All rights strictly reserved. Reproduction or issue to third parties in any form whatever is not permitted without written authority from the proprietor. Property of FCI. Copyright FCI.

PRODUCT NUMBER
SEE NOTE 1



OPTIONAL ORIENTATION KEY
SEE NOTE 11

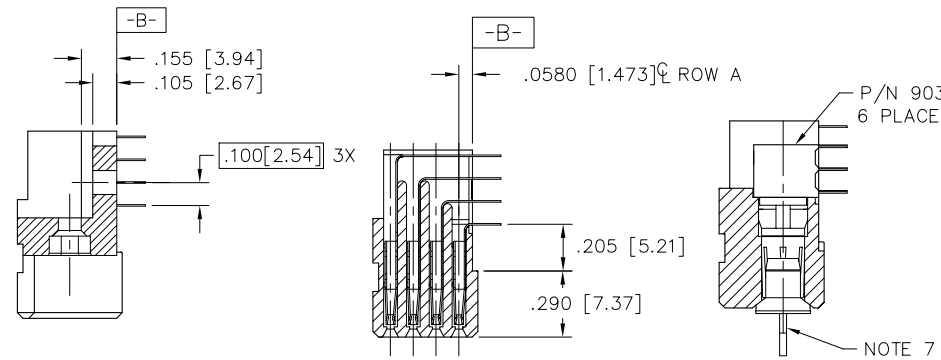
mat'l. code SEE NOTE 3				tolerances unless otherwise specified		CUSTOMER COPY	 www.fciconnect.com	
ltr	ecn no	dr	date	linear	$.XX \pm .01 / .XX \pm .3$	projection		
A	V23463	JM	10/19/92		$.XXX \pm .005 / .XX \pm .13$		title	
B	V30297	JM	2/9/93		$.XXX \pm .0020 / .XXX \pm .051$		4 ROW R/A RECEPTACLE SOLDER TAIL, 0 G.P., 6 P.P.	
C	V40243	PDP	1/13/94	angles	$0^\circ \pm 2'$		product family	
D	V90135	DLW	4/5/99	dr	D.SHEAFFER 9/15/92		HPC	code
E	V00255	LSS	1/13/00	engr	S.CLARK 9/15/92	scale 1:1	size	213
F	V05-0737	DAI	9/21/05	chr	S.CLARK 9/15/92		A	50565
				appd	S.CLARK 9/15/92		1 of 3	
sheet index	revision sheet	F 1	F 2	F 3				

cage code
22526

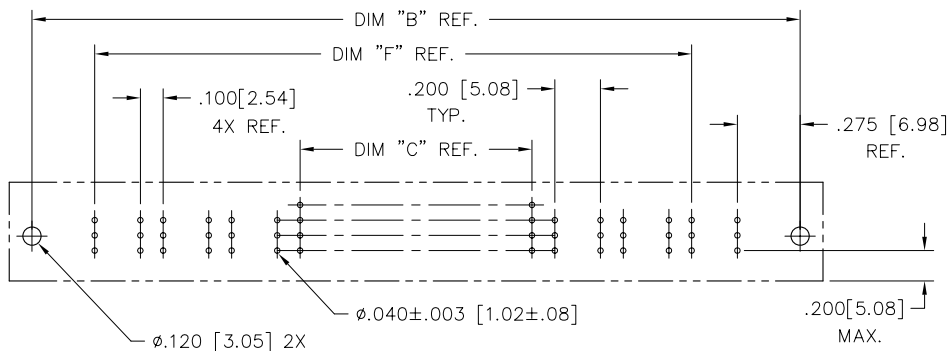
Tous droits strictement réservés. Reproduction ou communication à des tiers interdite sous quelque forme que ce soit sans autorisation écrite du propriétaire. Propriété de c. FCI. Droits de reproduction FCI.

All rights strictly reserved. Reproduction or issue to third parties in any form whatever is not permitted without written authority from the proprietor. Property of FCI. Copyright FCI.

PRODUCT NUMBER
SEE NOTE 1



SECTION U-U SECTION X-X SECTION P-P



RECOMMENDED PCB LAYOUT
(ALL HOLES LOCATED ON .100 [2.54] GRID UNLESS OTHERWISE SPECIFIED)

NOTES:

- ① PRODUCT NUMBERING CODE:
50565 - X YYY Z LF
 - LEAD FREE (OPTIONAL)
 - TAIL LENGTH SEE TABLE, SEE NOTE 5
 - NO. OF POSITIONS SEE NOTE 2
 - PLATING SEE NOTE 4
 - BASE NUMBER
- ② THIS PRODUCT IS CONFIGURED IN SIZES OF 6 THRU 80 COLUMNS IN INCREMENTS OF ONE. i.e.: 6,7,8,9.....79,80.
- ③ HOUSING MATERIAL: GLASS AND MINERAL FILLED HI-TEMP THERMOPLASTIC, FLAME RETARDENT PER UL94V-0 COLOR:BLANK CONTACT MATERIAL: BeCu
- ④ PLATING:
SEE TABLE FOR CONTACT AREA AND SOLDER TAIL PLATING OF SIGNAL LINES.
POWER CONTACTS ARE PLATED WITH 30μ"/.76μ MIN Au, OR 50μ"/1.27μ MIN Ni IN CONTACT AREA AND HAVE THE SAME TAIL PLATING AS THE SIGNAL CONTACTS FOR CORRESPONDING PRODUCT NUMBER.
- ⑤ TAIL LENGTHS: ALL POWER TAILS ARE 1.45/3.68
SEE TABLE FOR SIGNAL TAIL LENGTHS
- ⑥ MANUFACTURERS NAME, PART NUMBER AND LOT CODE TO APPEAR ON THIS SURFACE PER BUS-12-108.
- ⑦ POWER SOCKET LOCATOR (P/N 50233) TO BE REMOVED AFTER SOLDERING OPERATION.
- ⑧ LENGTH FORMULAS:
DIM A =100/2.54 X NO. OF COLUMNS + 2.55/64.8
DIM B =100/2.54 X NO. OF COLUMNS + 2.250/57.15
DIM C =100/2.54 X NO. OF COLUMNS - .100/2.54
DIM F =.100/2.54 X NO. OF COLUMNS + 1.500/38.10
- ⑨ THE PRODUCTS (WITH "LF" SUFFIX) MEET EUROPEAN UNION DIRECTIVES AND OTHER COUNTRY REGULATIONS AS DESCRIBED IN GS-22-008.
- ⑩ THIS HOUSING WILL WITHSTAND EXPOSURE TO 260° C PEAK TEMPERATURE FOR 10-30 SECONDS IN A CONVECTION, INFRA-RED, VAPOR PHASE REFLOW OVEN.
- ⑪ WHERE APPLICABLE, THE OPTIONAL ORIENTATION KEYS ARE BAGGED SEPERATELY AND INCLUDED IN THE SAME BOX WITH THE CONNECTORS.

mat'l. code SEE NOTE 3		tolerances unless otherwise specified		CUSTOMER COPY		 www.fciconnect.com	
ltr	ecn no	dr	date	linear	.XX ±.01/.X±.3	projection	
F					.XXX ±.005/.XX±.13	 title 4 ROW R/A RECEPTACLE SOLDER TAIL, 0 G.P., 6 P.P.	
				angles	.XXX ±.0020/.XXX±.051	 product family HPC code 213 size dwg no 50565 sheet 2 of	
				dr	D.SHEAFFER 9/15/92	INCH/MM	
				enr	S.CLARK 9/15/92	scale 1:1	
				chr	S.CLARK 9/15/92		
				appd	S.CLARK 9/15/92		
sheet index	revision sheet						

Tous droits strictement reserves. Reproduction ou communication a des tiers interdite sous quelque forme que ce soit sans autorisation ecrite du proprietaire. Propriete de c FCI. Droits de reproduction FCI.

All rights strictly reserved. Reproduction or issue to third parties in any form whatever is not permitted without written authority from the proprietor. Property of FCI. Copyright FCI.

FCI

B

ACAD

1 | 2

3 |

4

PRODUCT NUMBER	NUMBER OF POSITIONS SEE NOTE 2	OPTIONAL ORIENTATION KEY SEE NOTE 11	TAIL LENGTH OF SIGNAL TAILS	SOLDER TAIL PLATING	CONTACT AREA PLATING SEE NOTE 4
50565 -1YYYE	YYY	-	.125±.010/3.18±0.25	TIN-LEAD	30μ"/0.76μ GOLD
50565 -1YYYF	YYY	-	.145±.010/3.68±0.25	TIN-LEAD	30μ"/0.76μ GOLD
50565 -1YYYH	YYY	-	.180±.010/4.57±0.25	TIN-LEAD	30μ"/0.76μ GOLD
50565 -3YYYE	YYY	-	.125±.010/3.18±0.25	TIN-LEAD	50μ"/1.27μ GOLD
50565 -3YYYF	YYY	-	.145±.010/3.68±0.25	TIN-LEAD	50μ"/1.27μ GOLD
50565 -3YYYH	YYY	-	.180±.010/4.57±0.25	TIN-LEAD	50μ"/1.27μ GOLD
50565 -5YYYE	YYY	-	.125±.010/3.18±0.25	TIN-LEAD	30μ"/0.76μ GXT
50565 -5YYYELF	YYY	-	.125±.010/3.18±0.25	TIN	30μ"/0.76μ GXT
50565 -5YYYF	YYY	-	.145±.010/3.68±0.25	TIN-LEAD	30μ"/0.76μ GXT
50565 -5YYYFLF	YYY	-	.145±.010/3.68±0.25	TIN	30μ"/0.76μ GXT
50565 -5YYYH	YYY	-	.180±.010/4.57±0.25	TIN-LEAD	30μ"/0.76μ GXT
50565 -5YYYHLF	YYY	-	.180±.010/4.57±0.25	TIN	30μ"/0.76μ GXT
50565 -XX006	60	YES	.125±.010/3.18±0.25	TIN-LEAD	30μ"/0.76μ GOLD
50565 -XX006LF	60	YES	.125±.010/3.18±0.25	TIN	30μ"/0.76μ GXT
50565 -XX006A	60	-	.125±.010/3.18±0.25	TIN-LEAD	30μ"/0.76μ GOLD
50565 -XX006ALF	60	-	.125±.010/3.18±0.25	TIN	30μ"/0.76μ GXT
50565 -XX007	60	YES	.125±.010/3.18±0.25	TIN-LEAD	30μ"/0.76μ GOLD
50565 -XX007LF	60	YES	.125±.010/3.18±0.25	TIN	30μ"/0.76μ GXT
50565 -XX007A	60	-	.125±.010/3.18±0.25	TIN-LEAD	30μ"/0.76μ GOLD
50565 -XX007ALF	60	-	.125±.010/3.18±0.25	TIN	30μ"/0.76μ GXT

A

A

mat'l. code SEE NOTE 3				tolerances unless otherwise specified			CUSTOMER COPY		FCI www.fciconnect.com	
ltr	ecn no	dr	date	linear	.XX ±.01/.X±.13	projection	title		4 ROW R/A RECEPTACLE	
F					.XXX ±.005/.XX±.13		SOLDER TAIL, 0 G.P., 6 P.P.		product family HPC	
				angles	0° ±2°		size		213	
				dr	D.SHEAFFER 9/15/92	INCH/MM	scale		A 50565	
				enr	S.CLARK 9/15/92	1:1	sheet		3 of	
				chr	S.CLARK 9/15/92		cage code		22526	
				appd	S.CLARK 9/15/92		sheet		3 of	
sheet index	revision sheet									

B

1 | 2

3 |

4

ACAD

PDM: Rev:F

STATUS Released

Printed: Oct 02, 2008